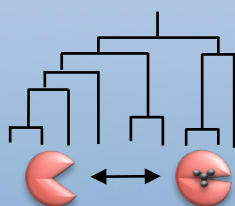


Vendredi 17 juin 2016


Amphithéâtre Hubert Curien
62 bis rue Gay Lussac 75005 Paris



Mini-Symposium Clamshell Domains

Programme

Organisation: David Stroebel et Pierre Paoletti

- | | | |
|-------|--|---|
| 9h00 | Accueil / Introduction |  |
| 9h10 | Denis Faure & Solange Morera (I2BC, CNRS, Gif sur Yvette)
<i>"Clamshell proteins in Agrobacterium tumefaciens: structures, ligands and functions in the host-pathogen interaction"</i> | |
| 9h55 | Elodie Lesne & Elian Dupré (IBL / Institut Pasteur, Lille)
<i>"BvgS, a bacterial sensor with Venus fly trap domains"</i> | |
| 10h40 | Francine Ascher (Université Paris Descartes, CNRS, Paris)
<i>"Selectivity at orthosteric binding site of metabotropic glutamate receptors"</i> | |
| 11h25 | David Stroebel & Pierre Paoletti (IBENS, ENS, Paris)
<i>"How clamshell-like domains orchestrate assembly and function in ionotropic glutamate receptors"</i> | |
| 12h10 | Déjeuner-Bufferet | |
| 13h30 | Jérôme Vicogne & Colette Dissous (Institut Pasteur/ IBL, Lille)
<i>"The Venus FlyTrap module extends its power on receptor tyrosine kinases"</i> | |
| 14h15 | Philippe Rondard & Jean-Philippe Pin (IGF, Montpellier)
<i>"Dynamics and modulation of neuroreceptors: mGluRs and GABABRs"</i> | |
| 15h00 | Karine Rottier (Christian Mitri, Institut Pasteur, Paris)
<i>"Anopheles gambiae, Venus Kinase receptors, potential target for new generation of insecticide"</i> | |
| 15h45 | Café | |
| 16h15 | Discussions <i>"Clamshell domains, an evolutionary success"</i> | |
| 17h00 | Conclusion / Clôture | |

Contact et Inscription: david.stroebel@ens.fr / 0144323892